



Product Care

- Like all fine, handcrafted products, Labrazel accessories should be handled with care. Our pewter items can be gently polished with commercial metal polishes or a paste made with dishwashing soap and baking powder; for all other products, use only a soft cloth and mild soap if needed.
- Unless otherwise specified, our products are not dishwasher-safe.
- Our brass and pewter pump mechanisms are designed for years of trouble-free performance with proper maintenance.
- Complete care and cleaning instructions for our pump mechanisms are provided below.

Product Care

Even a premium-quality pump can become clogged when soap dries inside the mechanism. This will occur when a pump is used infrequently, particularly in guest bathrooms and seasonal residences.

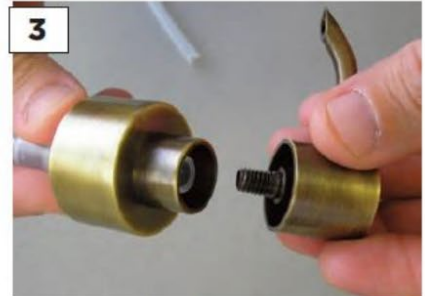
To unclog a pump, please follow these steps:



1 Remove the pump assembly from your dispenser.



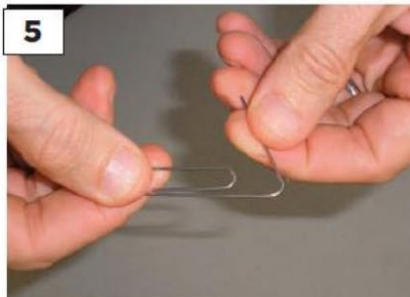
2 Hold the plastic tube containing the spring mechanism (as shown above) and unscrew the top portion by turning it counter-clockwise.



3 The top portion should be unscrewed completely and removed from the base as shown.



4 Soak the top portion in hot water and dishwashing soap to loosen clogged debris.



5 Unbend a paper clip for use as a tool to loosen and remove debris.



6 First insert the paper clip into the spout. Some force will be required to drive the clip through the entire length of the spout and fully clear the debris.



7 Next, insert the paper clip into the threaded neck. Again, force will be required to drive the clip through the entire length of the neck and clear the debris.



8 To confirm the top portion is completely clear, hold it as shown and run water through the threaded neck. Repeat steps 6 & 7 and continue to flush until a steady stream of water flows through the threaded neck and out of the spout.



9 Screw the top portion back on the base: Hold the plastic tube firmly and turn the top portion clockwise. Reinstall the finished pump assembly on your dispenser.